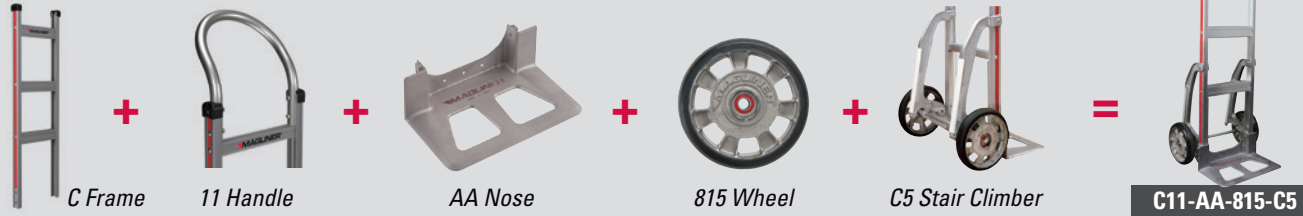


DESIGN YOUR OWN MAGLINER



Lightweight, high strength aircraft grade aluminum.

Engineered for optimum strength to weight ratio.

Personalization available to deter theft and promote company.

Aluminum die-cast material is high strength and corrosion resistant.

Magliner wheels include a proprietary sealed bearing with lifetime lubrication.

Frames

HAND TRUCK FRAMES

- Bolted cross braces are up to 10 times more rigid and over twice as strong as riveted braces due to custom engineered internal rib structure
- Trilobular, thread locking screws exceed IFI locking standards encompassing extreme resistance to vibrational loosening
- Resilient aluminum design has a unique combination of high strength and low weight
- Bolted modular frame construction offers increased reparability compared to riveted frame construction

ALL ALUMINUM



P/N	M/N	HT.(IN.)	WT.(LBS.)
300001	1	39	6.0

Straight back with 1-1/4" cross braces.



P/N	M/N	HT.(IN.)	WT.(LBS.)
302653	C	39	6.5
300042	8	52	8.5

Straight back with 2-1/8" cross braces.

ALUMINUM W/MOLDED CROSS BRACES



P/N	M/N	HT.(IN.)	WT.(LBS.)
300021	5	39	5.0
303113	Q	52	7.0

Curved back with 1-1/4" cross braces.



P/N	M/N	HT.(IN.)	WT.(LBS.)
300032	6	39	5.0
300105	7	39	5.5

Straight back with 1-1/4" cross braces.

VERTICAL STRAP OPTIONS



BOLT-ON VERTICAL STRAP

ALUMINUM CROSS BRACES				MOLDED CROSS BRACES			
P/N	FRAME HT.(IN.)	WT. (LBS.)	for Frame P/N	P/N	FRAME HT.(IN.)	WT. (LBS.)	for Frame P/N
86350	39	1.0	300001	86352	39	1.0	300021
86351	39	1.0	302653	86356	52	1.0	303113
86355	52	1.5	300042				

All Magliner hand trucks have a 500 pound capacity unless otherwise stated.

Handles

HORIZONTAL LOOP



P/N	M/N	WT.(LBS.)
301000	11	1.0

Standard loop.



P/N	M/N	WT.(LBS.)
301008	19	1.5

Standard loop with vinyl sleeve.



P/N	M/N	WT.(LBS.)
301005	18	1.0

Angled standard loop (3" higher).



P/N	M/N	WT.(LBS.)
301001	24	1.0

Standard loop with straight top.

DOUBLE GRIP



P/N	M/N	WT.(LBS.)
86031	16	2.0

Bolted double grip with universal brace.



P/N	M/N	H"	WT.(LBS.)
301137	30	52	2.5

Welded double grip.



P/N	M/N	H"	WT.(LBS.)
301126	13B	55	3.0
301127	13C	60	3.3

Welded pistol grip.



P/N	M/N	H"	WT.(LBS.)
301004	17	52	2.0

Welded pistol grip.

VERTICAL LOOP



P/N	M/N	H"	WT.(LBS.)
300981	15A	52	2.25

300990 15A 52 2.25 for #300021 frame

300978 15C 60 3.5

300977 15C 60 3.5 for #300021 frame

Welded vertical loop.



P/N	M/N	H"	WT.(LBS.)
300994	60	52	2.0

Welded vertical loop.



P/N	M/N	H"	WT.(LBS.)
301115	25B	55	3.0

Welded double loop.



P/N	M/N	H"	WT.(LBS.)
302297	35B	55	3.0
302298	35D	62	3.5

Welded double loop.

DOUBLE LOOP

All Magliner wheels feature the trademarked red sealed semi-precision bearing.

SOLID RUBBER



P/N	M/N	D"	WT.(LBS.)
10815	815	8	2.5

Mold-on rubber on die-cast hub.



P/N	M/N	D"	WT.(LBS.)
11825	825	8	3.5
111025	1025	10	5.5

Puncture resistant, solid rubber tire on one-piece polyolefin hub.



P/N	M/N	D"	WT.(LBS.)
10830	830	8	2.0
101030	1030	10	3.0

Puncture resistant, non-marking balloon cushion rubber on one-piece polyolefin hub.

MICROCELLULAR



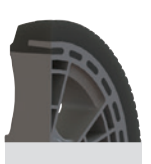
P/N	M/N	D"	WT.(LBS.)
111075	1075	10	3.0

Puncture resistant, non-marking microcellular tire on one-piece high-density, interlocking polyethylene hub.



P/N	M/N	D"	WT.(LBS.)
111080	1080	10	4.0

Puncture resistant, non-marking microcellular tire on one-piece high-density, interlocking polyethylene hub.



Flow through design interlocks rubber, preventing run-off and scalping. (111070, 111075 and 111080 wheels)

PNEUMATIC



P/N	M/N	D"	WT.(LBS.)
121060	1060	10	4.5

4-ply tube-type tire with three-piece off-set hub.



P/N	M/N	D"	WT.(LBS.)
101020	1020	10	7.0

Foam filled with three-piece off-set hub.



P/N	M/N	D"	WT.(LBS.)
131010	1010	10	4.0

Puncture resistant, non-marking tire on one-piece steel hub.

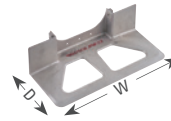


P/N	M/N	D"	WT.(LBS.)
111070	1070	10	2.5

Puncture resistant, non-marking microcellular tire on one-piece high-density, interlocking polyethylene hub.

Wheels

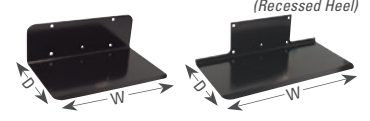
DIE-CAST



P/N	M/N	W"	D"	WT.(LBS.)
300200	AA	14	7-1/2	4.0
300196	HA	14	12	5.0
300201	UA	18	7-1/2	5.0

Designed with aluminum alloys chosen for high strength and corrosion resistance.

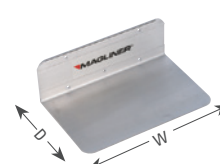
STEEL



P/N	M/N	W"	D"	WT.(LBS.)
300544	E3	14	9	7-1/2
300554	E4	14	9	N/A
300545	G3	18	9	7-1/2
300548	G4	18	9	N/A

High strength, low alloy powder coated steel with machined edge for easily sliding under loads.

EXTRUDED ALUMINUM



P/N	M/N	W"	FLUSH MOUNT D"	RECESSED MOUNT* D"	WT.(LBS.)
300244	E1	14	9	7-1/8	4.5
300254	E2	14	9	N/A	5.0
300245	G1	18	9	7-1/8	5.5
300248	G2	18	9	N/A	6.0
300203	K1	16	12	N/A	7.0
300215	K2	20	12	N/A	8.5

6000 series alloy designed with a tapered profile and leading edge for ease of use and maximum strength to weight ratio.

* Recessed mount not available on narrow-aisle models.

HAND TRUCK

Accessories



P/N	WT.(LBS.)
86006	2.5

Heavy-duty cast stair climbers with replaceable low-friction polymer glide bars.



P/N	WT.(LBS.)
86092	2.5

Heavy-duty cast stair climbers with replaceable low-friction polymer glide bars. Narrow aisle models only.



P/N	H"	WT.(LBS.)
40050	55	1.5
40010	60	1.5
40011	68	2.5

Hi-U frame extensions add height and stability for taller loads (hardware required).



P/N	H"	WT.(LBS.)
40050F	55	2.0
40010F	60	2.0
40011F	68	2.5

Hi-U frame extensions with foam sleeve (hardware required).



P/N	WT.(LBS.)
302497	0.5

Padded cover for Hi-U frame extensions.



P/N	H"	W"	WT.(LBS.)
303134	16	7	3.0
303135	20	9	4.5

Extruded aluminum wings add an additional 6" of load support. 33"/39" frames use kit 303134 (2 upper – 9.5" L x 3"W and 2 lower – 13" L x 3"W) and 52" frames use kit 303135 (2 upper/4 lower wings).



P/N	H"	W"	WT.(LBS.)
301114K	8-½	2-½	1.5

Wheel guards prevent loads from rubbing against hand truck wheels.



P/N	WT.(LBS.)
301121K	0.5

Holds keg in place securely.

For use with 300021 frame only.



P/N	L"	WT.(LBS.)
32511K	4	1.5
32513K	5	1.5

Sliding keg hook swings out of the way when not in use. 4" hook for straight side kegs and 5" hook for barrel-style kegs (rod and hardware required).



P/N	WT.(LBS.)
302544	2.0

Folding nose kit (302541 without lock rod) allows aluminum extruded noses to fold flush with frame when not in use. 500 pound capacity. Not available on narrow aisle models.

ACCESSORY BAGS



P/N	L"	W"	WT.(LBS.)
302680	13	8	0.5

- Main pocket 13" long x 8" wide x 2" deep with 1 Velcro strap.
- Outside pocket 5-¼" long x 5-½" wide.



P/N	L"	W"	WT.(LBS.)
302681	16-½	12	1.0

- 2 top pockets, sealed with Velcro 10" long x 6" wide.
- 1 tool pocket 12" wide x 3-½" deep.



P/N	L"	W"	WT.(LBS.)
302682	12-½	12	1.0

- 1 pocket 11" deep x 9" wide.



P/N	L"	W"	WT.(LBS.)
302683	29	12	1.0

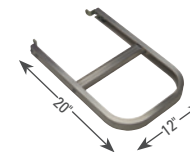
- 2 top pockets, sealed with Velcro 10-½" long x 6" wide.
- 1 tool pocket 12" wide x 3-½" deep.
- 1 pocket 11-½" wide x 12" deep.

FOLDING NOSE (300 POUND CAPACITY)



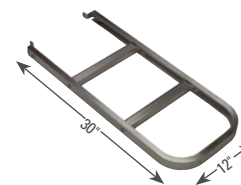
P/N	M/N	WT.(LBS.)
301019	F1	4.0

Low-profile formed aluminum extension.



P/N	M/N	WT.(LBS.)
301025	F2	2.5

Extruded aluminum channel extension.



P/N	M/N	WT.(LBS.)
301026	F3	4.0

Extruded aluminum channel extension.

MOLDED ENGINEERED PLASTIC CURB RAMP



- Light and portable, easy to handle
- Aggressive non-skid surface for secure footing
- Open surface to allow debris to pass through
- Strong and durable

P/N	WT.(LBS.)
PKR220	9.0

SPECIFICATIONS

Usable width	24"
Overall width	27"
Overall length	27"
Service range	Up to 8"
Capacity	600 lbs.
Weight	9 lbs.

ALUMINUM CURB RAMP

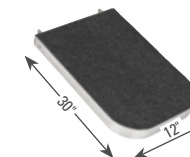


- Lightweight
- Corrosion-resistant aluminum
- Replaceable safety walk strips for secure footing
- 2" x 5" Hand cut-out for easy handling
- 1-¼" High safety side rails

P/N	WT.(LBS.)
ALCR	16.0

SPECIFICATIONS

Usable width	26-½"
Overall width	27"
Overall length	27"
Service range	2-½" - 8"
Capacity	750 lbs.
Weight	16 lbs.



P/N	WT.(LBS.)
301052	4.5

Extruded aluminum channel extension with carpet.